

The Provisional That Will Change The Way You Think About Temps!

Radica's revolutionary, lab-processed provisional material combines exceptionally high flexural strength with best-in-class esthetics. The Radica system now offers all 16 A-D shades and two bleached options to suit a wide range of cases. This combination of brawn and beauty enables you to easily add Radica temps into your lineup in a variety of roles.

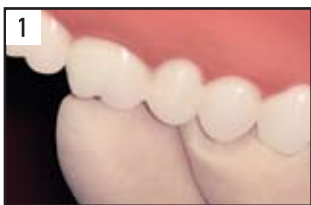
Radica's expanded indication offers your patients use for up to 2-years in the mouth for all single unit restorations, inlays/onlays, and 3-unit bridges up to the 2nd bicuspid. In addition, Radica serves in patient treatment guidance and planning. The material has engineered radiopacity, which is optimal for chairside X-ray or CT scanning purposes.

With Radica Provisional & Diagnostic resin, you will provide your patients with:

- A premium, extremely esthetic provisional as they transition to their permanent restoration
- An unparalleled life-like tooth-colored diagnostic for case presentation
- Optimal low-wear, highly-durable material for long-term provisional use
- Life-like diagnostic restorations that will help manage patient expectations and allow patients to fully accept the permanent restoration



Placement Technique - Success in 8 Simple Steps



1 Test fit of the restoration onto finished tooth preparations. Evaluate and adjust for complete seating with acceptable occlusion.



2 Clean the internal surface with aluminum oxide or lightly grind with 1/4 round bur.



3 Reline and replace restoration with a PMMA acrylic, such as Temporary® Bridge Resin from Caulk or a bisacryl such as Integrity Temporary C&B Material. For long term provisional restoration, bisacryls are highly recommended rather than a PMMA acrylic. Consult manufacturer's instructions for proper relining techniques.



4 Reseat the case and allow excess material to express.



5 Remove excess material.



6 Upon removal of the restoration, finish the margins with a product such as Enhance® Finishing System and polish with a product such as PoGo® One Step Diamond Micro Polishers.



7 Apply a temporary cement, such as Integrity® TempGrip® from Caulk and seat restoration.



8 Finish and polish the case with a system such as Enhance® Finishing System and PoGo® One Step Diamond Micro-Polishers.

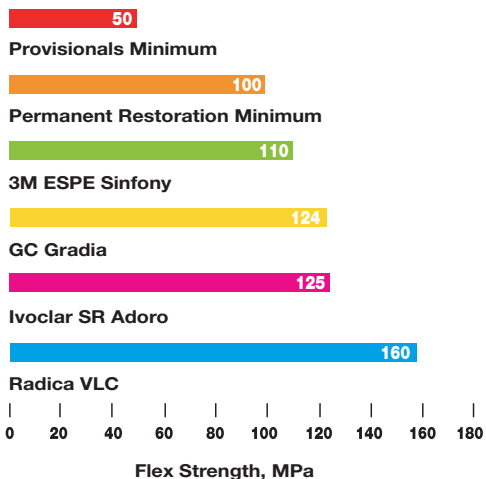
Repairs and Relines with Radica

You will quickly discover that Radica works for all relines, repair and placement procedures. What's more, Radica's monomer-free formulation and extraoral cure means lower incidences of sensitivity – it's a tissue friendly and biocompatible system. Radica's superior strength and wear resistance will give you peace of mind when addressing any full mouth reconstruction and implant case.

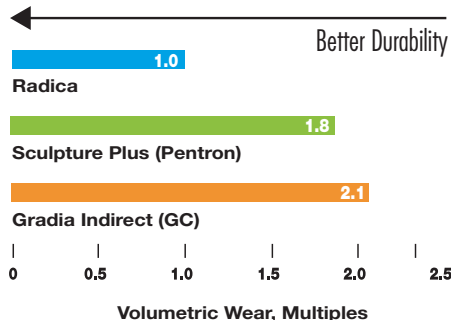
In the unusual event of a crack or break, repairs are easy with Radica. First roughen the fracture surface with medium burs, and then clean thoroughly. Treat with Prime and Bond® NT™ Universal Adhesive and cure (making sure to avoid applying adhesive to tooth surfaces). Then simply apply TPH® 3 MicroMatrix Restorative as repair material and light cure.

SCIENTIFIC STUDIES CONFIRM, RADICA PERFORMANCE EXCEEDS ALL OTHER TEMPORARY RESINS

Superior Strength (160 MPa)

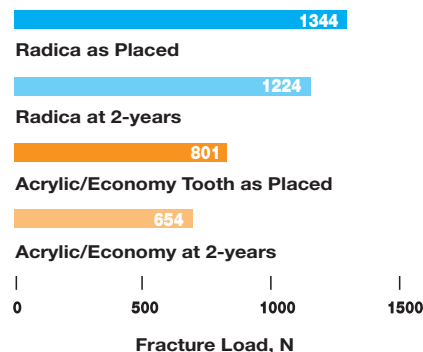


Superior Wear Resistance



Jain V, Platt J, Moore BK, Borges GA, Wear in second generation laboratory composites, J. Dent Res; 2008: 87- A, 0378.

Long-Term Durability



Lang R, Rosentritt M, Handel G, Fracture Resistance of Reinforced Provisional Crown & Bridge Restoration Materials, J. Dent Res; 2007: 86- A, 1973.

For better dentistry

3M ESPE Sinfony, Ivoclar SR Adoro, GC Gradia & Sculpture Plus (Pentron) are not registered trademarks of DENTSPLY International.

DENTSPLY
PROSTHETICS

DENTSPLY International Inc.
DENTSPLY Ceramco
570 West College Avenue
York, PA 17404
1.800.487.0100
www.ceramco.com or www.dentsply.com

Distributed by:
DENTSPLY Canada
161 Vinyl Court
Woodbridge, Ontario, L4L 4A3
1.800.263.1437 Canada

LabLocator

www.ceramco.com/radica
www.allceramiccrowns.com

Rx only

Patent Pending
PC#090821
Rev. 02/09